



# Black Predator 108

BROCHURE



BALTHAZAR  
YACHTING





## Black Predator 108

The Black Predator 108, with its striking all-black exterior, is a true sports car on the water. Sleek, powerful, and undeniably bold, this yacht turns heads wherever it goes, making an unforgettable impression at every marina. Designed for those who crave both speed and luxury, the Predator 108 offers a dynamic experience that feels like driving a high-performance sports car—only on the open sea.

The yacht's aggressive black profile enhances its sense of power, while the retractable roof and large windows flood the interior with natural light, blending the excitement of the outdoors with the comfort of the indoors. The spacious, open-plan saloon, coupled with the expansive aft deck, creates the perfect setting for both high-energy gatherings and laid-back relaxation. The large swim platform and built-in garage make it ideal for thrill-seekers who want quick access to water sports or adventurous coastal explorations.

With its top-tier performance, the Black Predator 108 is built for those who want to combine speed, style, and comfort. Its sleek black exterior, reminiscent of a luxury sports car, offers not just a yacht but an exhilarating, head-turning experience on the water—ideal for those seeking freedom with an edge of sophistication.



# At Glance



Build:  
Sunseeker Yachts



Length:  
108 ft (33 m)

An All Black Refit



Guests:  
25



No. of cabins:  
4

## Key Features

- All Black Exterior.
- Expansive Deck for Relaxation.
- Wide range of adventure and sports activities.
- Wellness experiences.
- Stabilizers at anchor and underway.
- Spacious swimming platform.
- Front Deck Equipped with a Jacuzzi.



BALTHAZAR  
YACHTING





Front Deck





Aft Deck







*Aft Deck Dining*





Aft Deck







BALTHAZAR

## Top Deck Seating





BALTHAZAR

## Swimming Platform



BALTHAZAR  
YACHTING





Main Lounge





## Dining Area



BALTHAZAR  
YACHTING





BALTHAZAR

## Master Suite





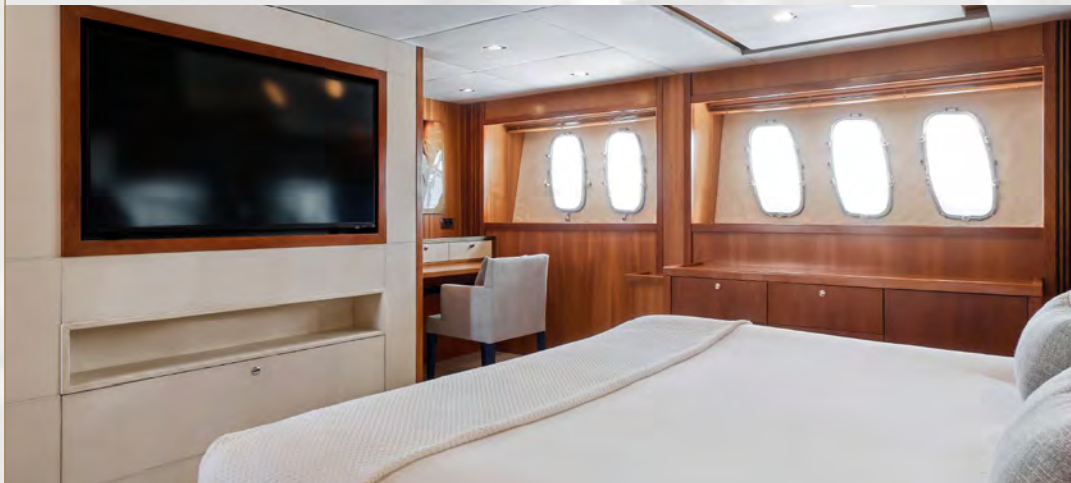
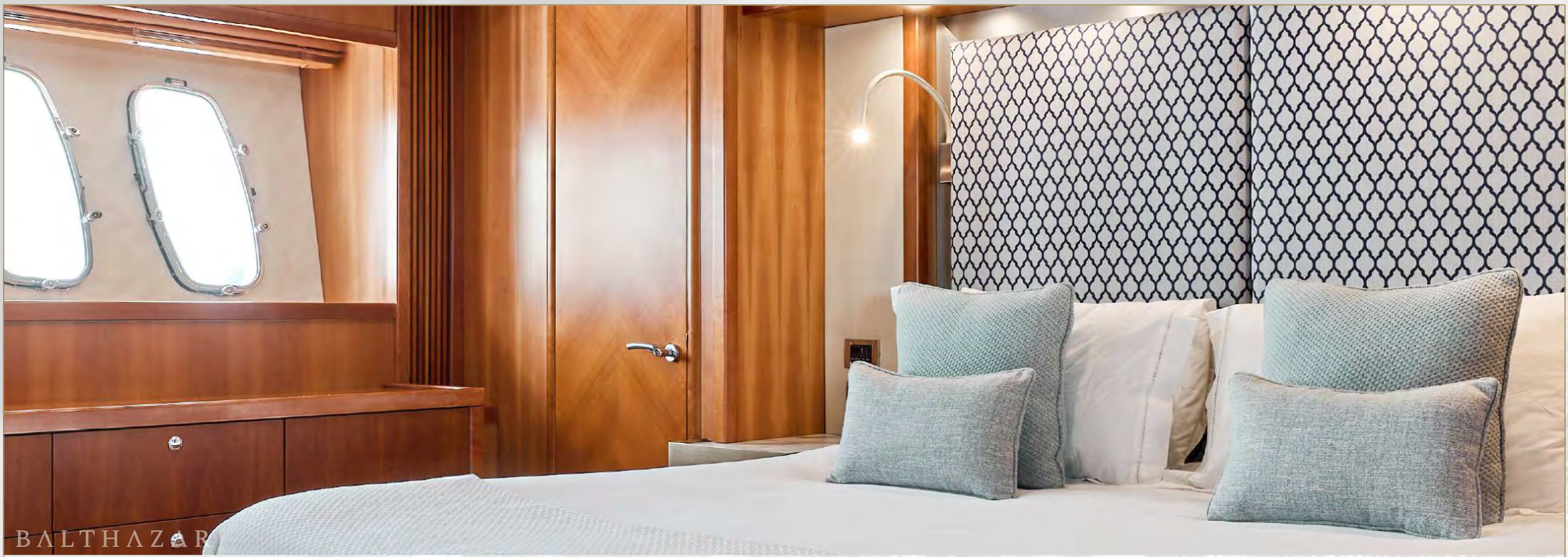
BALTHAZAR

## En Suite Bathroom



**BALTHAZAR**  
YACHTING





VIP Cabin



# Specifications



Build  
Sunseeker Yachts



Length  
108 ft (33 m)



Beam  
6.3 m



Draft  
2.3 m



Gross Tonnage  
139 t



Cruising Speed  
33 Knots



Maximum Speed  
42 Knots



Fuel Consumption  
Cruising  
568 L per hour



Engines  
3 x 2000hp MTU  
16V 2000 M91



Interior Design  
Don Shead  
Yacht Design



Guest  
25



Sleeps  
8



Cabin Types  
1 x Master Suite, 1 x VIP,  
2 x Twin Suites



Crew  
5





**Balthazar Yachting**

Iris Bay Tower, Business Bay, Dubai, UAE

+971 4 608 6008 | [dubai@balthazaryachting.com](mailto:dubai@balthazaryachting.com)

[www.balthazaryachting.com](http://www.balthazaryachting.com)